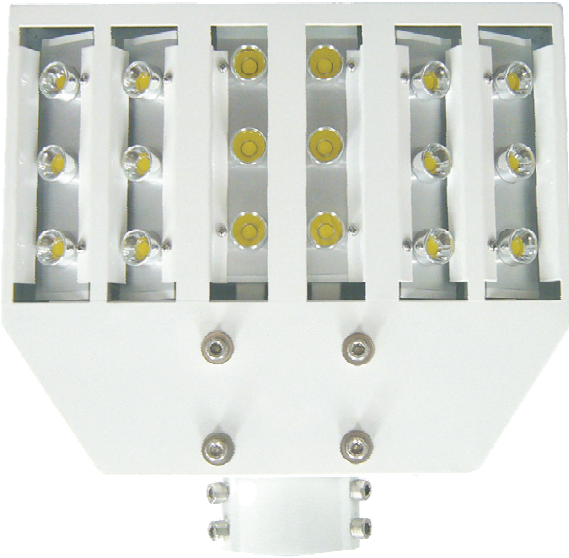


## LUXMAN™ -SL Series

## LUXMAN™ - SL-3x6 Streetlight



LUXMAN™ -SL-3x6

## 45W, IP67 Rated LED Streetlight

## Features

- High power LED streetlights
- High luminous intensity output: 2,520 lumens
- Min. 70% lumen maintenance after 35,000 hours
- Modular design, lightweight, easy assembly
- Higher energy efficiency, longer operating life and lower operating cost than traditional mercury lamps
- Easy maintenance by general electricians
- Light bars or LED modules are individually replaceable
- Insects cannot build nests and shade the LED modules
- Rating: IP67

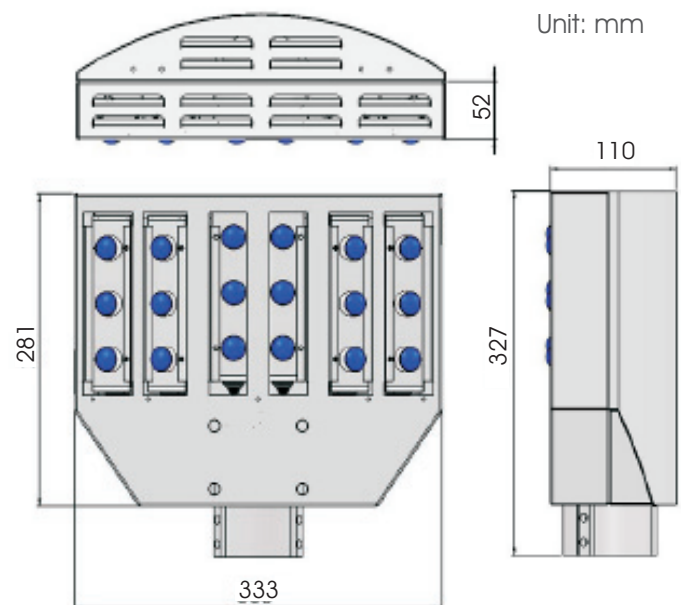
Light up streets, alleys, courtyards, parks and walkways with the LuxMan™ -SL streetlights.

## ELECTRONIC SPECIFICATIONS

MODEL NAME	LUXMAN-SL-3x6
<b>Power Specifications</b>	
Input Voltage	100~240VAC (50 ~ 60Hz)
Input Current	0.45 / 0.25 A
Power Consumption	45W
<b>Optical Specifications</b>	
Output	2,520 lumens
Operating Life	Min. 70% lumen maintenance after 35,000 hrs.
<b>Environment Specifications</b>	
Temperature	60° C
Operating Temp.	-20 ~ 50° C
Storage Temp.	-40 ~ 60° C
Operating Humidity	10 ~ 90%
Dimensions (cm)	(L) 33.3 x (W) 32.7 x (H) 11
Weight	5.4 kgs.
Installation Height	4~5 meters

Ver: 20091211

## DIMENSIONS



## Taiwan Operations:

## Color Stars, Inc.

10F, No. 566 Jung Jeng Rd., Sindian City  
Taipei County 231, Taiwan, R.O.C.

Tel: +886-2-8667-6600; Fax: +886-2-8667-1400

Email: sales@colorstars.com; Website: www.colorstars.com

## Headquarters:

## ColorStars Group

One Technology Dr., Suite F-213  
Irvine, CA 92618 USA

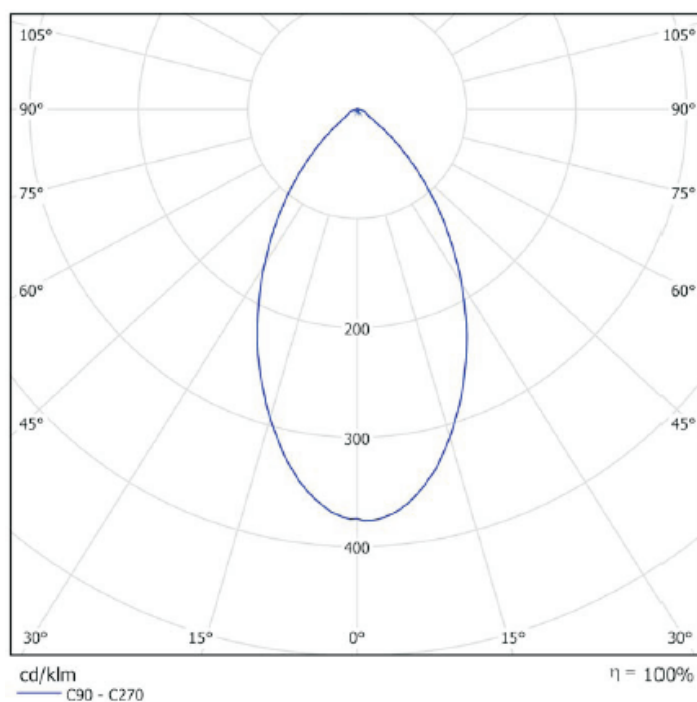
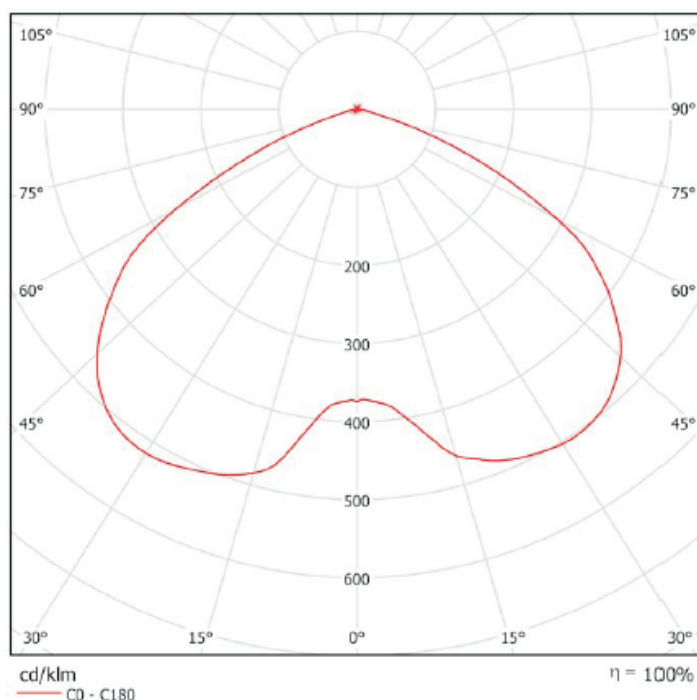
Tel: + (949) 336-6161; Fax: + (949) 336-6165

Email: sales@colorstars.com; Website: www.colorstars.com

## LUXMAN™ -SL Series

# LUXMAN™ - SL-3x6 Streetlight

Candlepower Distribution Curves



**Taiwan Operations:**

**Color Stars, Inc.**

10F, No. 566 Jung Jeng Rd., Sindian City  
Taipei County 231, Taiwan, R.O.C.

Tel: +886-2-8667-6600; Fax: +886-2-8667-1400

Email: sales@colorstars.com; Website: www.colorstars.com



**Headquarters:**

**ColorStars Group**

One Technology Dr., Suite F-213  
Irvine, CA 92618 USA

Tel: + (949) 336-6161; Fax: + (949) 336-6165

Email: sales@colorstars.com; Website: www.colorstars.com

# LUXMAN™ -SL Series

## LUXMAN™ - SL-3x6 Streetlight

### Illumination Distribution Charts

Angle of LED module 30° 30° 0° 0° 30° 30°

⊙ = The position of the LED streetlight

4M 45W																					
Average illumination		15.56																			
Angle of elevation		15 degree																			
Average of shading value		1: 5.19																			
	10M	9M	8M	7M	6M	5M	4M	3M	2M	1M	0M	1M	2M	3M	4M	5M	6M	7M	8M	9M	10M
5M			4	4	4	4	5	6	7	7	7	7	7	6	5	4	4	3	3		
4M			4	5	5	6	8	9	11	13	13	12	12	9	8	6	4	3	3		
3M			4	5	6	8	11	15	19	24	24	23	20	15	11	7	6	4	3		
2M			5	6	7	10	15	23	34	44	64	43	31	21	15	9	6	4	3		
1M			4	6	7	12	18	28	45	63	65	61	41	26	16	10	6	4	3		
0M			3	4	6	10	18	28	44	65	69	60	41	25	14	9	6	4	3		
											⊙										

5M 45W																					
Average illumination		14.11																			
Angle of elevation		15 degree																			
Average of shading value		1: 4.70																			
	10M	9M	8M	7M	6M	5M	4M	3M	2M	1M	0M	1M	2M	3M	4M	5M	6M	7M	8M	9M	10M
5M			4	4	5	6	6	8	8	9	9	9	8	7	7	6	5	4	4		
4M			4	5	6	8	9	11	13	14	15	9	14	11	9	7	6	5	4		
3M			5	6	7	10	13	16	21	24	25	14	20	16	13	9	7	5	4		
2M			5	7	9	12	16	22	31	36	36	24	28	21	15	10	8	5	4		
1M			5	7	9	12	18	25	37	45	45	36	34	24	16	11	8	5	4		
0M			3	5	8	11	18	25	36	45	45	44	32	23	15	10	7	5	3		
											⊙										

6M 45W																					
Average illumination		13.47																			
Angle of elevation		15 degree																			
Average of shading value		1: 3.37																			
	10M	9M	8M	7M	6M	5M	4M	3M	2M	1M	0M	1M	2M	3M	4M	5M	6M	7M	8M	9M	10M
5M			2	3	4	4	5	5	6	7	7	7	6	5	5	4	3	3	3		
4M			4	4	5	4	6	7	10	12	13	12	10	7	6	5	4	3	3		
3M			4	4	5	6	8	11	16	18	20	18	17	10	8	5	5	4	3		
2M			3	4	6	7	10	14	22	27	28	26	23	14	9	7	5	4	3		
1M			4	5	5	8	11	16	25	32	34	32	25	15	10	7	5	4	3		
0M			3	3	4	7	10	15	24	31	33	30	23	15	10	7	5	4	2		
											⊙										

Taiwan Operations:  
**Color Stars, Inc.**  
 10F, No. 566 Jung Jeng Rd., Sindian City  
 Taipei County 231, Taiwan, R.O.C.  
 Tel: +886-2-8667-6600; Fax: +886-2-8667-1400  
 Email: sales@colorstars.com; Website: www.colorstars.com



Headquarters:  
**ColorStars Group**  
 One Technology Dr., Suite F-213  
 Irvine, CA 92618 USA  
 Tel: +(949) 336-6161; Fax: +(949) 336-6165  
 Email: sales@colorstars.com; Website: www.colorstars.com